

Latest News

Dr. Badawi's lectures and presentations

Jan 10th 2010 - Dr Badawi presented his research at the University of Brussels in Belgium to a group of Belgian orthodontists as well as university staff and students.

Jan 30th 2010 - Dr. Badawi gave a lecture on the use of ligation forces, in Orange County, California

Dr. Badawi is scheduled to lecture at the Damon Forum Feb 18th in front of a crowd of more than 1000 Orthodontists.

Dr. Badawi's Orthodontic Philosophy

I am a strong believer in functional appliance therapy. The timely use of functional appliances can fully correct severe bite problems, saving our patients from tooth extractions or even jaw surgery later in life.

Twin-Blocks are my functional appliance of choice. Twin-blocks is composed of two removable appliances that guide the patient into a normal class I bite. I prefer Twin-Blocks over other types of functional appliances because it is more TMJ friendly compared to a Herbst appliance.

The only drawback of Twin-Blocks is that it depends on patients' cooperation. I very rarely have a problem with cooperation, because we spend a LOT of time explaining to the patient and the parents how orthopedic therapy works



Case Report

Severe Overbite & Severe crowding non-extraction treatment

J.F. was 14 years old when she presented to my office with a severe Overbite of almost 100%, with severe upper and lower arch crowding.

Her dental arches were extremely narrow, therefore the objective of her treatment was to open her bite and expand her dental archforms to restore more natural arch widths, while at the same time opening enough spaces to accommodate her crowded teeth.



Case summary

A 14 year- old female patient presented to my office with Class I dental relationships and severe increase in overbite. Both dental arches were severely crowded. The deep overbite was complicated by the fact that she did not show any of her upper anterior teeth on smiling, therefore correcting her overbite with incisor intrusion was contraindicated.

Full fixed orthodontic treatment with passive self-ligation appliances and low friction / low force biomechanics were initiated. New protocols utilizing disclusion of the bite and the use of early, light force inter-arch elastics were employed along with low force wires. This method allowed for the development of the arch width in both arches, which facilitated opening enough space to accommodate tooth #32.

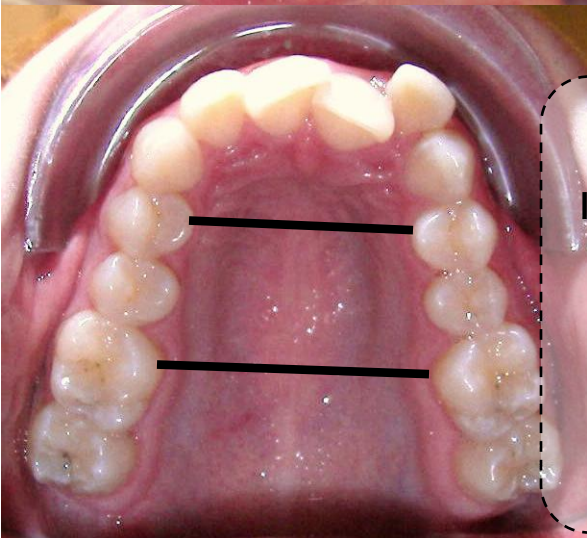
The significant deep bite was corrected and a functional occlusion was established with improved dento-facial esthetics utilizing a combination of low friction / low force orthodontic mechanics. Notice the impact of her treatment on her **facial and smile esthetics**. CAREFUL positioning of her brackets increased her incisal show at smiling and produced a well balanced smile arc. Notice the increase in incisal display at smiling and the arch form development achieved during her orthodontic treatment, Notice the significant improvement in her soft-tissue profile produced by non-extraction therapy.

The case was retained with bonded lingual wires and removable retainers worn while sleeping. Excellent patient compliance with inter-arch elastic wear was essential for the optimal result achieved in this case.

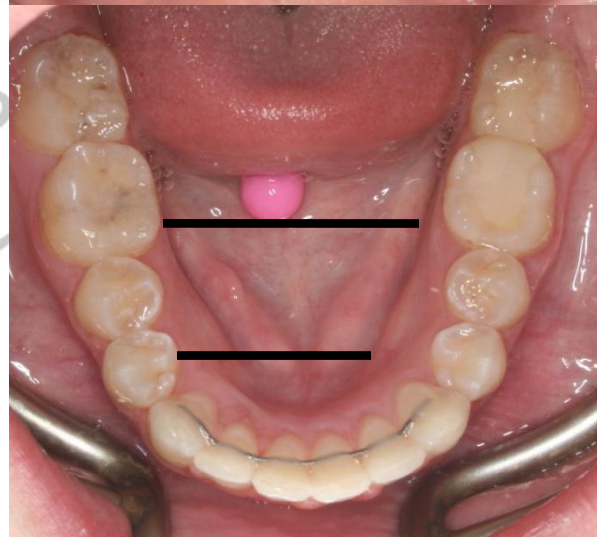
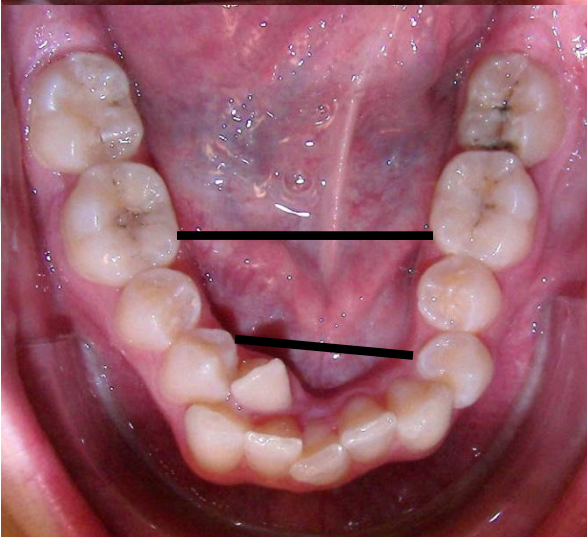
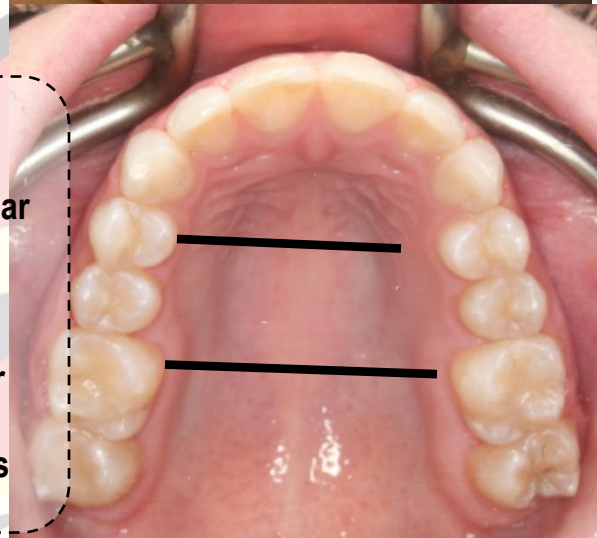
**Patient consent obtained for publication of clinical photographs and discussion of treatment*



Case analysis



Calibrated
Inter-Premolar
&
Inter-molar
width gains





Case Problem list:

- Upper arch severe crowding
- Lower arch severe crowding
- Severely constricted upper and lower archforms
- Significant midline discrepancy of more than 4mm
- Severe increase in Overbite
- Tooth #32 completely blocked out from the dental arch



We enjoy and take pride in what we do

Smile Elements team